

DRAWN BY: AD
 DATE: 11-21-11
 SCALE: 1/4" = 1'-0"

TERRAPIN ARCHITECTURE P.C.
 719 TAYLOR STREET
 PORT TOWNSEND, WA 98368
 (360) 379-8090

BUILDING SHELL
 VENTILATION PLAN

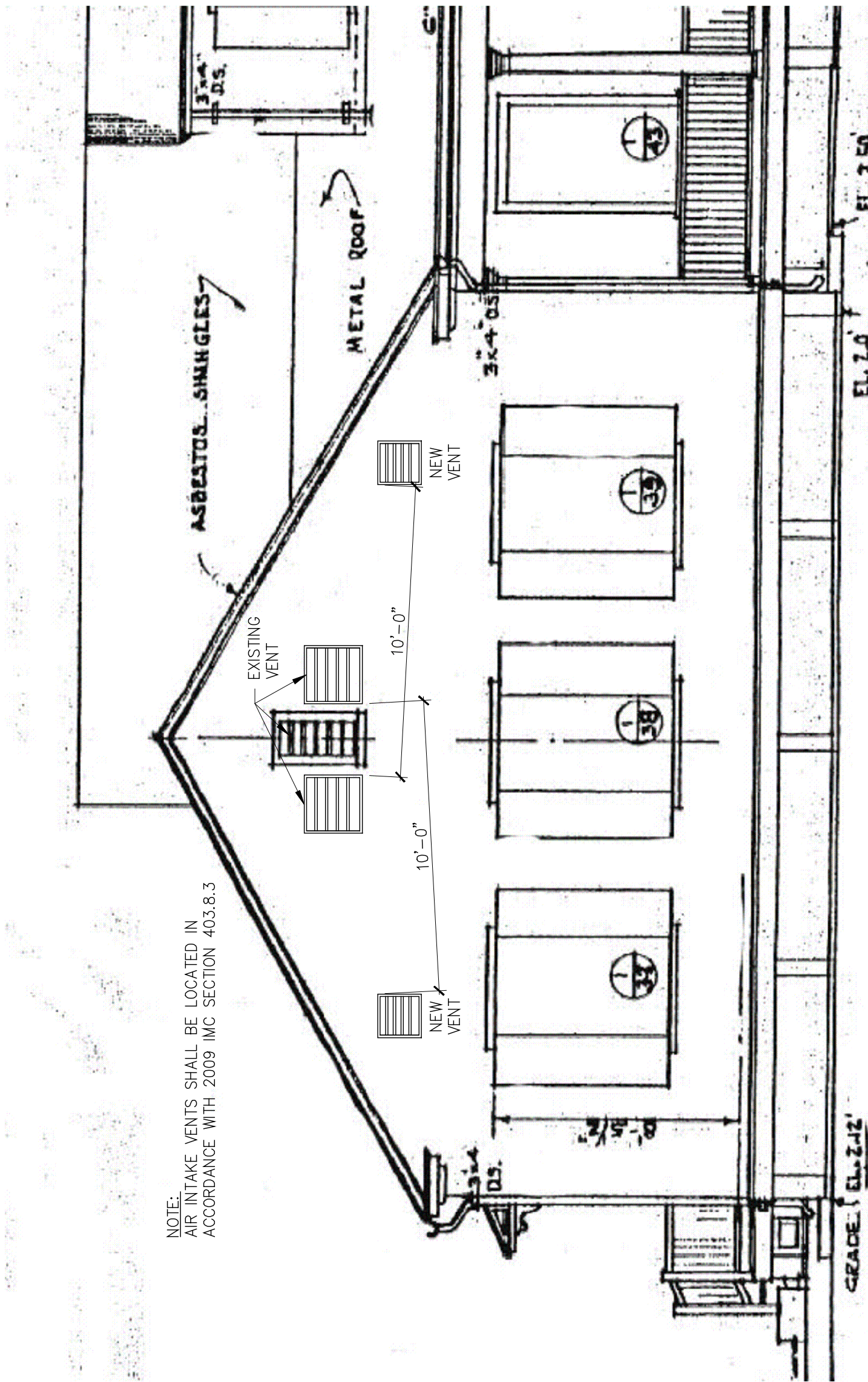
TENANT IMPROVEMENT FOR:
 CBP OFFICE
 375 HUDSON STREET
 PORT TOWNSEND, WA 98368

SHEET:
A2.1

REV	DATE	DESCRIPTION

© TERRAPIN ARCHITECTURE, P.C. 2011

HEAT RECOVERY VENTILATION SYSTEM TO SERVE
 CBP LEASE SPACE. (SEE SHEET A3.3 FOR ADDITIONAL
 VENTILATION SYSTEMS BY OTHERS)
 SYSTEM SHALL PROVIDE:
 • 50 CFM
 • 100% OUTSIDE AIR
 • POSITIVE PRESSURE IN COMPARISON TO PUBLIC AREAS OF
 BUILDING

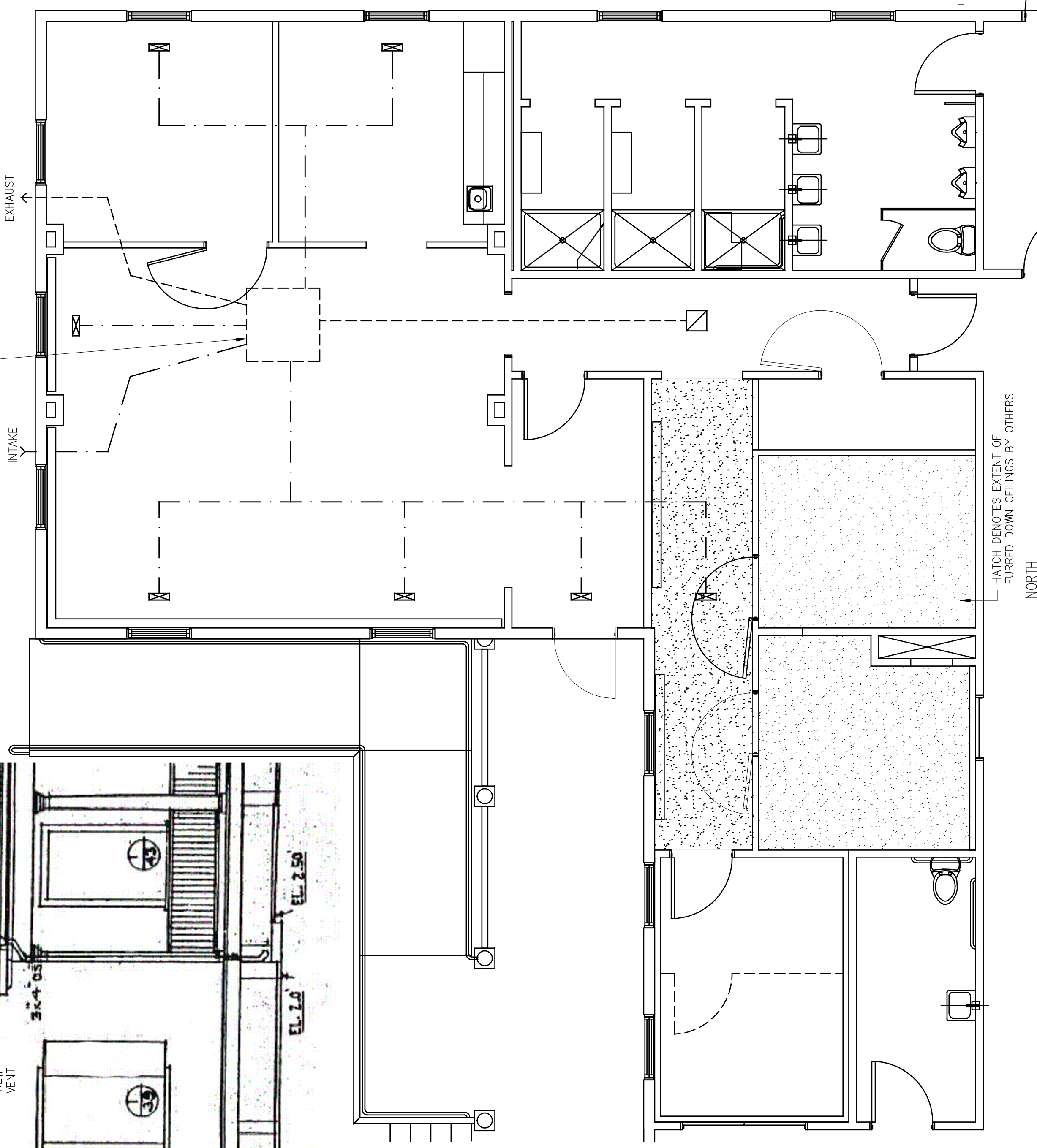


NORTH ELEVATION
 SCALE: 1/4" = 1'-0"

NOTE: VENTILATION N.I.C.
 VENTILATION WILL BE DONE ON
 A DESIGN-BUILD BASIS AND
 WILL BE SUBJECT TO A
 SEPARATE CONTRACT.

- VENTILATION PLAN GENERAL NOTES:
- VENTILATION SYSTEM TO BE LOCATED IN ATTIC ABOVE CBP OFFICE AREA. ACCESSIBLE THROUGH ACCESS DOOR ON UPPER FLOOR.
 - SEE ELEVATION ON SHEET A2.1 FOR LOCATION OF VENTS ON NORTH EXTERIOR OF BUILDING.

SYMBOL KEY:
 SUPPLY DIFFUSER IN CEILING
 INTAKE GRILLE IN CEILING



BUILDING SHELL VENTILATION PLAN
 SCALE: 1/4" = 1'-0"