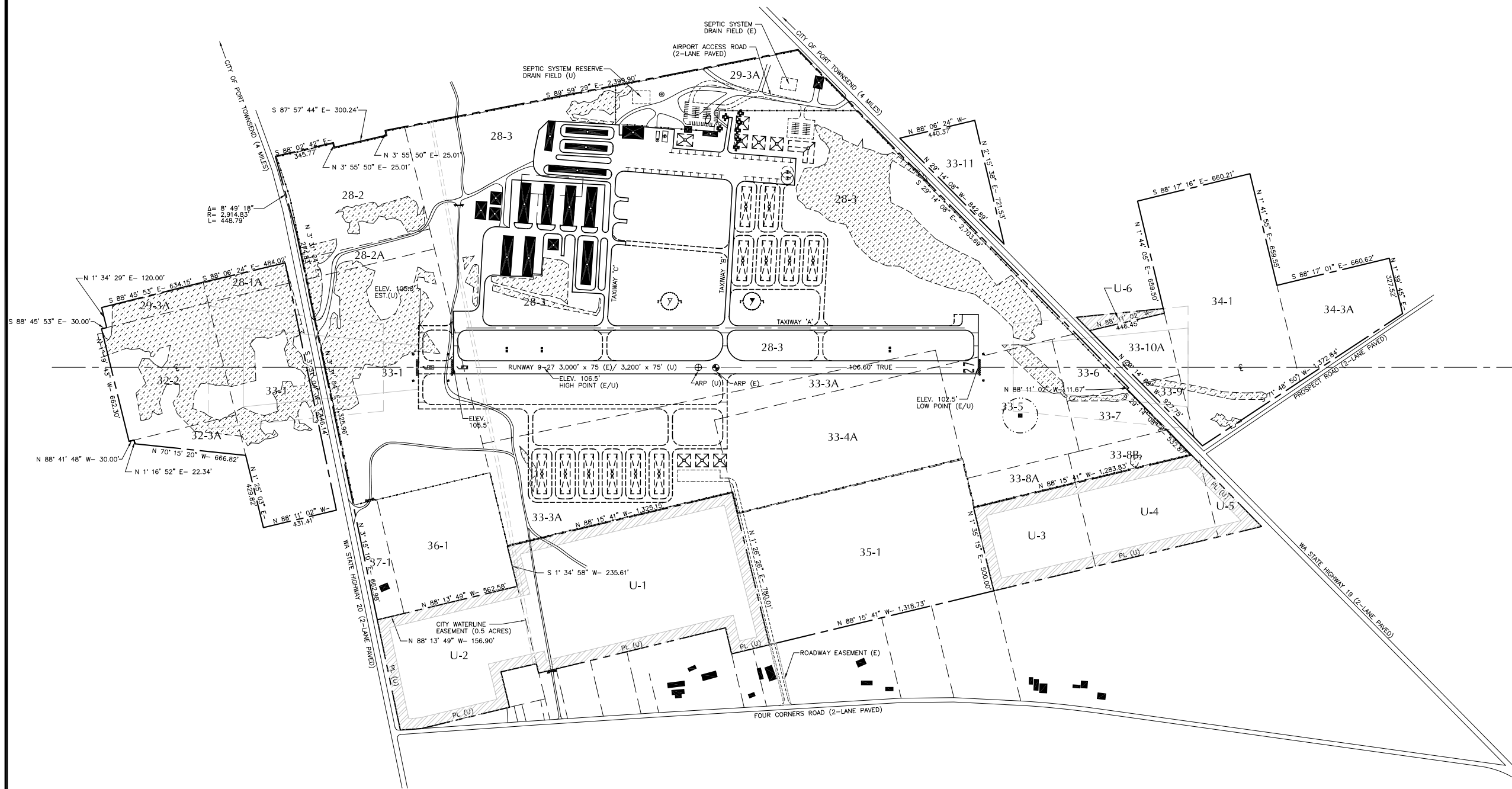
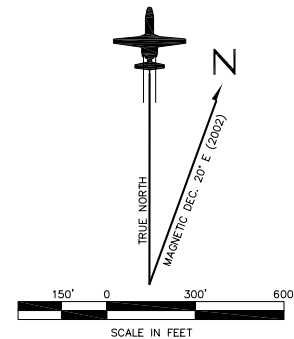


# EXHIBIT 'A' PROPERTY MAP



LEGEND	
PL (E)	AIRPORT PROPERTY LINE-EXISTING (E)
PL (U)	AIRPORT PROPERTY LINE-ULTIMATE (U)
---	PROPERTY PARCEL BOUNDARIES
▨	POTENTIAL ACQUISITION SITES (U)



**POTENTIAL AIRPORT PROPERTY ACQUISITION TABLE**

PARCEL	ACREAGE	DESCRIPTION OF ACQUISITION	OWNERSHIP STATUS	USE/ FUNCTION
U-1	23.60	FEE-SIMPLE ACQUISITION	PRIVATE OWNERSHIP	POTENTIAL INDUSTRIAL USE
U-2	11.66	FEE-SIMPLE ACQUISITION	PRIVATE OWNERSHIP	POTENTIAL INDUSTRIAL USE
U-3	6.78	FEE-SIMPLE ACQUISITION	PRIVATE OWNERSHIP	POTENTIAL INDUSTRIAL USE
U-4	8.18	FEE-SIMPLE ACQUISITION	PRIVATE OWNERSHIP	POTENTIAL INDUSTRIAL USE
U-5	1.62	FEE-SIMPLE ACQUISITION	PRIVATE OWNERSHIP	POTENTIAL INDUSTRIAL USE
U-6	0.61	FEE-SIMPLE ACQUISITION	PRIVATE OWNERSHIP	ULTIMATE AIRFIELD OPERATIONS
<b>TOTAL</b>	<b>52.45</b>			

SOURCE(S): JEFFERSON COUNTY PUBLIC WORKS/ COUNTY ASSESSOR'S OFFICE (2003).  
 THE ABOVE LISTED PARCELS MAY BE SUITABLE FOR ACQUISITION BY THE PORT FOR LIGHT INDUSTRIAL AND MANUFACTURING USES COMPATIBLE WITH AND SUPPORTING OF AIRPORT OPERATIONS. ANY PROPERTY ACQUIRED BY THE PORT FOR INCLUSION IN THE AIRPORT ESSENTIAL PUBLIC FACILITY (A-EPF) ZONE WOULD BE SUBJECT TO PUBLIC REVIEW AND COMMENT AS A PART OF THE JEFFERSON COUNTY COMPREHENSIVE PLAN ASSESSMENT PROCESS.

**EXISTING AIRPORT PROPERTY ACQUISITION TABLE**

PARCEL	ACREAGE	DESCRIPTION OF ACQUISITION	GRANTOR/ INTEREST	USE/ FUNCTION	FEDERAL GRANT NUMBER	DEED REFERENCE NUMBER	ACQUISITION DATE
28-1A	1.328	FEE-SIMPLE OWNERSHIP	CLARENCE LAMMERS	RPZ/BRL/AIRFIELD	AIP-02	AF #322335	06/12/89
28-2	8.744	FEE-SIMPLE OWNERSHIP	PAUL CRONAUER	AIRFIELD OPERATIONS	N/A	AF #309133/#297191	07/14/87
28-2A	1.463	FEE-SIMPLE OWNERSHIP	PAUL CRONAUER	AIRFIELD OPERATIONS	AIP-02	AF #309133	07/14/87
28-3	127.563	FEE-SIMPLE OWNERSHIP	JEFFERSON COUNTY, WA	AIRFIELD DEVELOPMENT	N/A	VOL. 151, PGS. 43-4	06/05/59
29-3A	1.747	FEE-SIMPLE OWNERSHIP	WILFRED CADWELL	AIRFIELD OPERATIONS	AIP-02	AF #323240	07/21/89
32-2	10.095	FEE-SIMPLE OWNERSHIP	WALTER KNIGHTLY	RUNWAY 9 RPZ	AIP-02	AF #324078	08/25/89
32-3A	1.857	FEE-SIMPLE OWNERSHIP	HARRY MINAKER	RUNWAY 9 RPZ	AIP-02	AF #324437	09/12/89
33-1	32.988	FEE-SIMPLE OWNERSHIP	WILLIAM MARLOW	AIRFIELD OPERATIONS/RWY 9 RPZ	AIP-02	AF #327399	01/08/90
33-3A	21.195	FEE-SIMPLE OWNERSHIP	WILLIAM MARLOW	AIRFIELD OPERATIONS	AIP-02	AF #335761	10/29/90
33-4A	16.432	FEE-SIMPLE OWNERSHIP	CHARLES ROGERS	AIRFIELD OPERATIONS	AIP-02	AF #333052	07/27/90
33-5	11.278	FEE-SIMPLE OWNERSHIP	ROBERT WILLS	AIRFIELD OPERATIONS	AIP-02	AF #324439	09/12/89
33-6	2.311	FEE-SIMPLE OWNERSHIP	JACK TICE	AIRFIELD OPERATIONS	AIP-02	AF #323683	08/11/89
33-7	2.997	FEE-SIMPLE OWNERSHIP	J.F. ROGERS	AIRFIELD OPERATIONS	AIP-02	AF #323239	07/21/89
33-8A	2.185	FEE-SIMPLE OWNERSHIP	NORM ROGERS	AIRFIELD OPERATIONS	AIP-02	AF #351905	07/23/92
33-8B	2.997	FEE-SIMPLE OWNERSHIP	J.J. ROGERS	AIRFIELD OPERATIONS	AIP-02	AF #351319	07/08/92
33-9	0.999	FEE-SIMPLE OWNERSHIP	ROBERT REEVES	RUNWAY 27 RPZ/BRL	AIP-02	AF #323241	07/21/89
33-10A	2.810	FEE-SIMPLE OWNERSHIP	EAGLE EYE	RUNWAY 27 RPZ/BRL	AIP-02	AF #355151	11/23/92
33-11	3.647	FEE-SIMPLE OWNERSHIP	DON BARRETT	AIRPORT RELATED DEVELOPMENT	N/A	AF #248992	04/06/78
34-1	20.390	FEE-SIMPLE OWNERSHIP	COMBS FAMILY TRUST	EASTERN AIRFIELD APPROACH	AIP-02	AF #324079	08/25/89
34-3A	6.782	FEE-SIMPLE OWNERSHIP	EAGLE EYE	EASTERN AIRFIELD APPROACH	AIP-02	AF #355149	11/23/92
35-1	23.600	FEE-SIMPLE OWNERSHIP	N.E. ROGERS, ET AL.	AIRPORT RELATED DEVELOPMENT	N/A	AF #333052	07/27/90
36-1	10.080	FEE-SIMPLE OWNERSHIP	DONALD BURTZ, ET AL.	AIRPORT RELATED DEVELOPMENT	N/A	AF #385867	10/25/95
37-1	2.230	FEE-SIMPLE OWNERSHIP	HARRY MINAKER, ET AL.	AIRPORT RELATED DEVELOPMENT	N/A	AF #385867	10/25/95
<b>TOTAL</b>	<b>315.718</b>						

SOURCE: PORT OF PORT TOWNSEND SURVEYOR'S CERTIFICATE (NOVEMBER 1992); PRIOR AIRPORT MASTER PLAN UPDATE PROPERTY MAP (SEPTEMBER 1994) (N/A) INDICATES INFORMATION NOT AVAILABLE.

## PORT OF PORT TOWNSEND, WASHINGTON JEFFERSON COUNTY INTERNATIONAL AIRPORT EXHIBIT 'A' PROPERTY MAP

JOB NO. 2002-107	DESIGNED BY: MAW	DATE: 02/24/03	REVISIONS:
DRAWING NO. NINE	DRAWN BY: MAW	DATE: 02/24/03	
SCALE AS SHOWN	CHECKED BY: PLH	DATE: 02/28/03	
SHEET: 9			
OF 9			